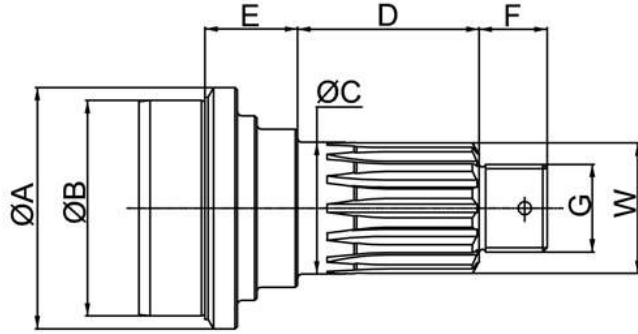
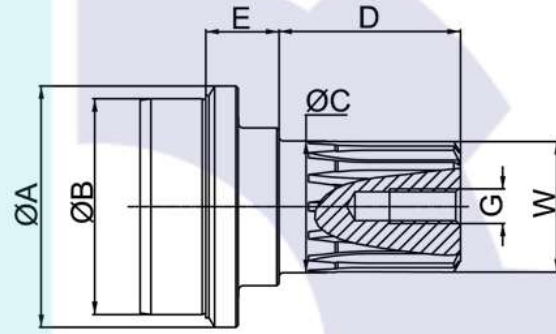


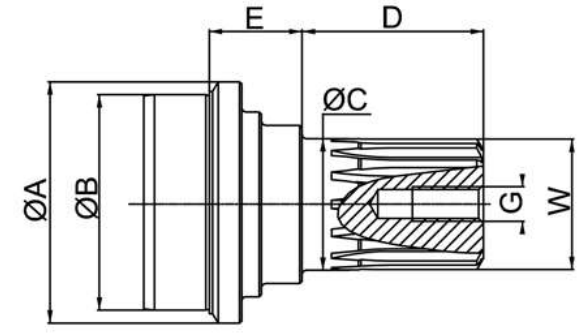
ARA YATAK MiLi - MIDSHIP STUB



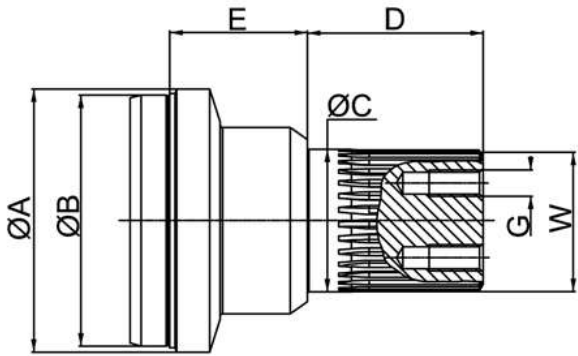
TİP / TYPE A



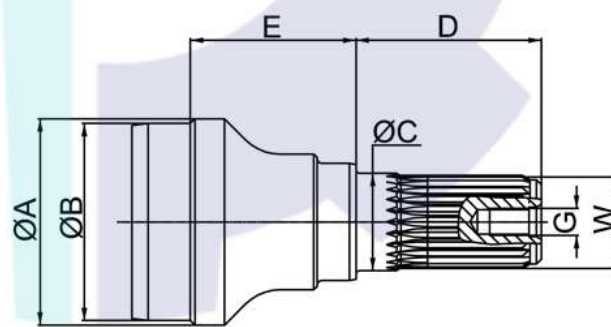
TİP / TYPE B



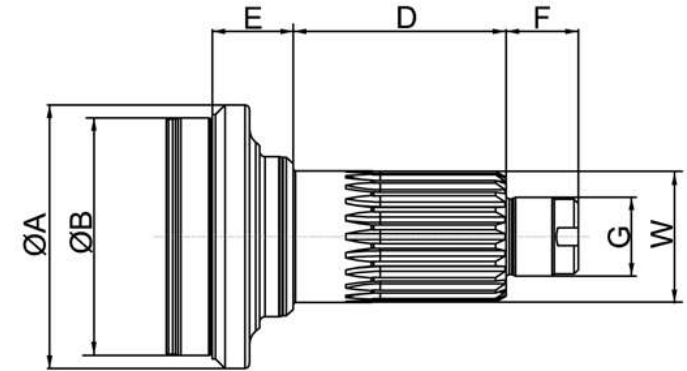
TİP / TYPE C



TİP / TYPE D



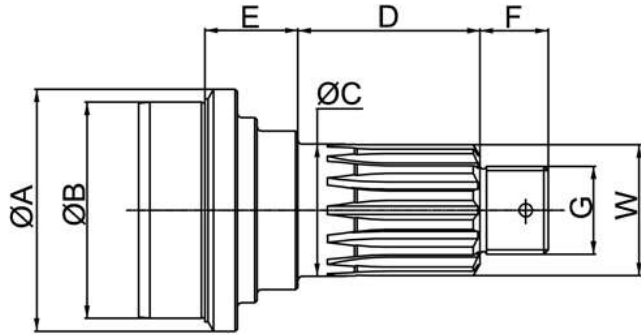
TİP / TYPE E



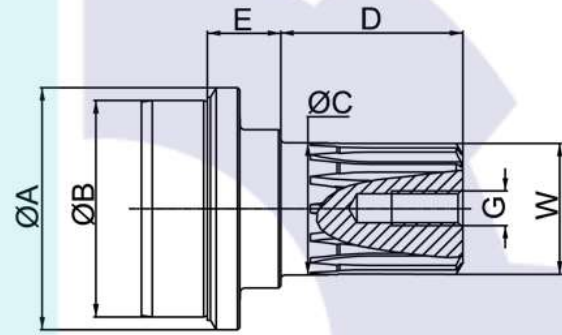
TİP / TYPE F

## ARA YATAK MiLi - MIDSHIP STUB

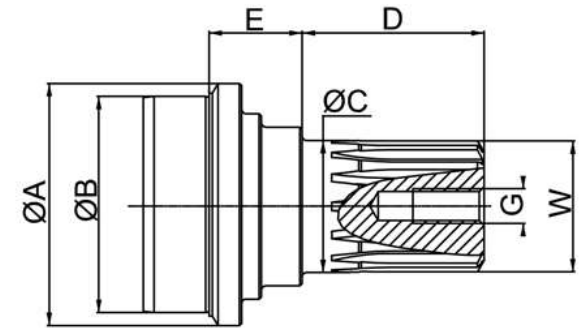
SERİ/SERIE	PARÇA/PART NO.	TİP/TYPE	ØA	ØB	ØC	D	E	F	G	W	BORU/TUBE
00385	MS.00385.01.02	B	92	82,3-0,13	55	89	31	-	M16x1,5	Ø55x2,5x30 °x20	Ø92x5
	MS.00385.03.02	B	92	82,3-0,13	55	89	31	-	M16x1,5	Ø55x2,5x30 °x20	Ø92x5
	MS.00385.05.02	B	120	112,3-0,13	55	89	55	-	M16x1,5	Ø55x2,5x30 °x20	Ø120x4
00389	MS.00389.01.02	B	100	92,3-0,13	55	89	31	-	M16x1,5	Ø55x2,5x30 °x20	Ø100x4
58730	MS.58730.01.02	C	92	82,3-0,13	55	76,3	43	-	M16x1,5	Ø55x2,5x30 °x20	Ø92x5
	MS.58730.03.02	C	100	92,3-0,13	55	76,3	43	-	M16x1,5	Ø55x2,5x30 °x20	Ø100x4
	MS.58730.04.02	A	110	98,3-0,13	60	82,8	42,3	31	1 1/4"-18UNEF 2A	Ø60x2,5x30 °x22	Ø110x6
	MS.58730.08.02	A	92	82,3-0,13	60	82,5	42,3	30	1 1/4"-18UNEF 2A	Ø60x2,5x30 °x22	Ø92x5
	MS.58730.09.02	A	110	98,3-0,13	60	94,3	42,3	31	1 1/4"-18UNEF 2A	Ø60x2,5x30 °x22	Ø110x6
MS.58730.11.02	C	90	80,3-0,13	55	76,3	43	-	M16x1,5	Ø55x2,5x30 °x20	Ø90x5	
58735	MS.58735.01.02	D	110	98,3-0,13	65	84	20	-	M12x1,5	Ø65x2x30 °x31	Ø110x6
	MS.58735.05.02	D	120	112,3-0,13	65	84	20	-	M12x1,5	Ø65x2x30 °x31	Ø120x4
	MS.58735.06.02	D	120	108,3-0,13	65	84	20	-	M12x1,5	Ø65x2x30 °x31	Ø120x6
	MS.58735.07.02	D	120	114,3-0,13	65	84	20	-	M12x1,5	Ø65x2x30 °x31	Ø120x3
68725	MS.68725.01.02	A	76,2	71,7-0,13	40	76,2	37,8	22	1"-20UNEF 2A	Ø40x2,5x30 °x14	Ø76,2x2,41
68730	MS.68730.01.02	A	88,9	84,4-0,13	45	66,5	44,5	22,4	1 1/16"-20UNF	Ø45x2,5x30 °x16	Ø88,9x2,4
	MS.68730.02.02	A	88,9	84,4-0,13	45	73,5	41	22,4	1 1/16"-20UNF	Ø45x2,5x30 °x16	Ø88,9x2,4
	MS.68730.03.02	F	90	84,4-0,13	40	76,2	43,5	32	M30x1,5	JIS Ø40x22x1,667	Ø90x3,2
	MS.68730.04.02	A	90	84,4-0,13	45	73,5	41	22,4	1 1/16"-20UNF	Ø45x2,5x30 °x16	Ø90x3,2
	MS.68730.05.02	F	88,9	84,4-0,13	40	76,2	43,5	32	M30x1,5	JIS Ø40x22x1,667	Ø88,9x2,4
	MS.68730.06.02	F	88,9	84,4-0,13	45	77,5	37	32	M30x1,5	Ø45x2,5x30 °x16	Ø88,9x2,4
	MS.68730.07.02	F	90	84,4-0,13	45	77,5	37	32	M30x1,5	Ø45x2,5x30 °x16	Ø90x3,2
68745	MS.68745.02.02	A	120	112,3-0,13	60	83	42,3	31	1 1/4"-18UNEF 2A	Ø60x2,5x30 °x22	Ø120x4
	MS.68745.05.02	A	120	112,3-0,13	60	110,5	52	34,5	M36x1,5	Ø60x2,5x30 °x22	Ø120x4
68755	MS.68755.01.02	A	110	98,3-0,13	60	91	42,3	30	1 1/4"-18UNEF 2A	Ø60x2,5x30 °x22	Ø110x6
	MS.68755.03.02	F	120	108,3-0,13	60	97	37	33	M36x1,5	Ø60x2,5x30 °x22	Ø120x6
	MS.68755.05.02	F	110	98,3-0,13	60	97	37	33	M36x1,5	Ø60x2,5x30 °x22	Ø110x6
	MS.68755.08.02	F	120	108,3-0,13	65	110,5	52	34,5	M36x1,5	Ø65x2x30 °x31	Ø120x6
68760	MS.68760.01.02	D	130	118,3-0,13	65	84	63,5	-	M12x1,5	Ø65x2x30 °x31	Ø130x6
	MS.68760.02.02	F	130	118,3-0,13	65	97	38	34,5	M36x1,5	Ø65x2x30 °x31	Ø130x6
	MS.68760.03.02	F	130	118,3-0,13	65	110,5	52	34,5	M36x1,5	Ø65x2x30 °x31	Ø130x6
68765	MS.68765.01.02	D	140	130,3-0,13	65	84	60,5	-	M12x1,5	Ø65x2x30 °x31	Ø140x5
	MS.68765.02.02	F	140	130,3-0,13	60	97	53	33	M36x1,5	Ø60x2,5x30 °x22	Ø140x5
	MS.68765.03.02	F	120	108,3-0,13	65	97	38	34,5	M36x1,5	Ø65x2x30 °x31	Ø120x6
	MS.68765.04.02	F	140	130,3-0,13	65	97	42	34,5	M36x1,5	Ø65x2x30 °x31	Ø140x5
	MS.68765.05.02	F	140	130,3-0,13	65	110,5	52	34,5	M36x1,5	Ø65x2x30 °x31	Ø140x5



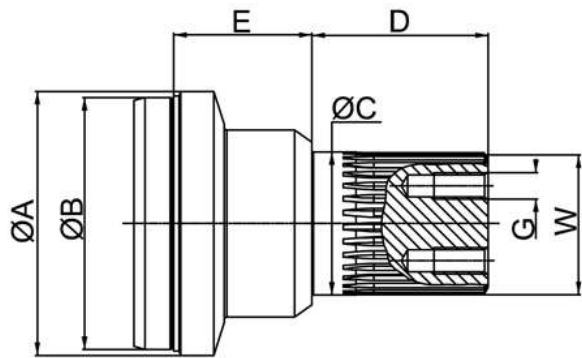
TİP / TYPE A



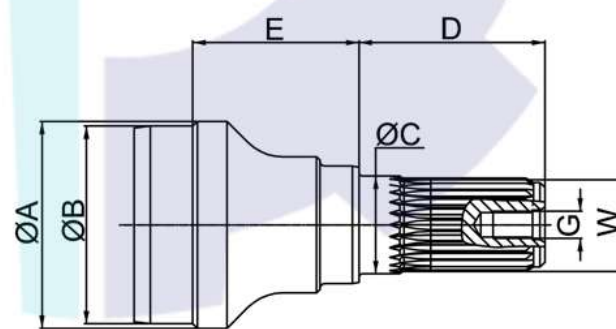
TİP / TYPE B



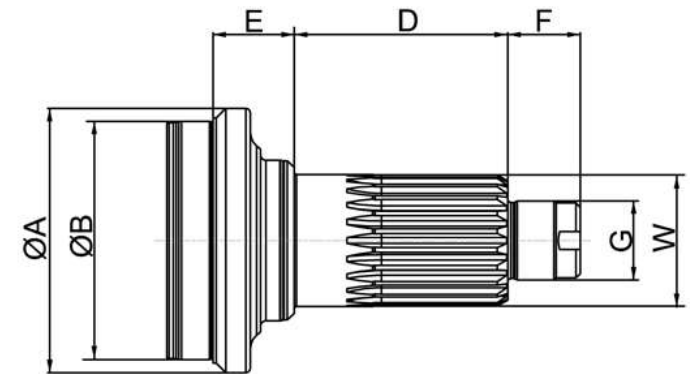
TİP / TYPE C



TİP / TYPE D



TİP / TYPE E

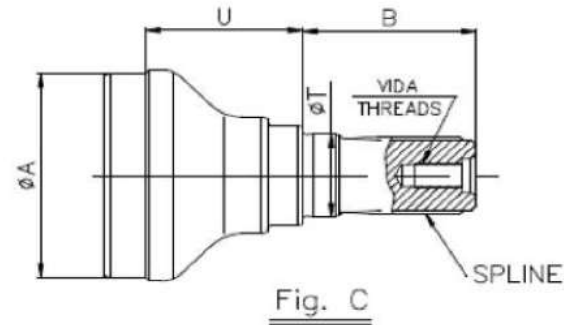
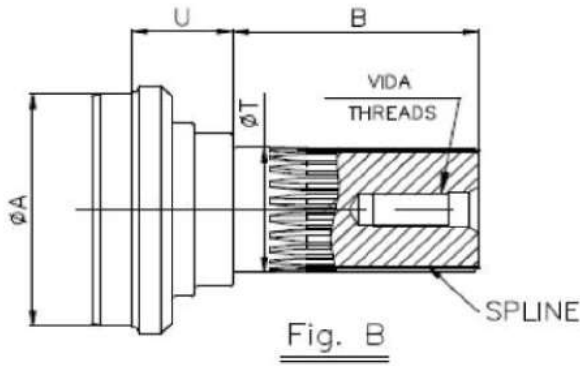
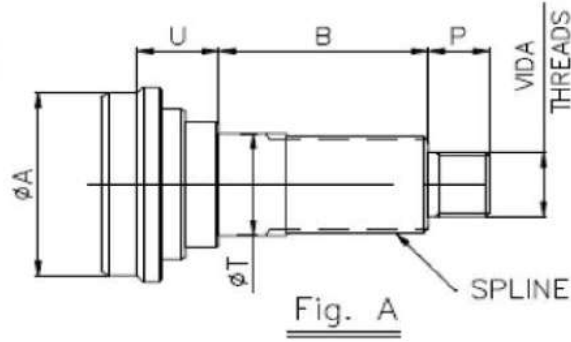


TİP / TYPE F



SERİ/SERIE	PARÇA/PART NO.	TİP/TYPE	ØA	ØB	ØC	D	E	F	G	W	BORU/TUBE
01140	MS.01140.03.02	E	63,5	60,6-0,13	30	57	51	-	M10x1	Z 26,24/48 DP,PA 45°	Ø63,5x1,6
01300	MS.01300.01.02	E	50,8	46,3-0,13	30	57	25	-	M10x1	Z 26,24/48 DP,PA 45°	Ø50,8x2,4
	MS.01300.04.02	E	76,2	73,3-0,13	30	57	55	-	M10x1	Z 26,24/48 DP,PA 45°	Ø76,2x1,6
	MS.01300.13.02	E	76,2	71,7-0,13	30	57	55	-	M10x1	Z 26,24/48 DP,PA 45°	Ø76,2x2,4
01310	MS.01310.01.02	A	70	66,3-0,13	35	59,5	32,5	25	3/4"-20UNEF 2A	SAE Ø34,9x10C	Ø70x2
	MS.01310.02.02	A	63,5	60,6-0,13	35	59,5	32,1	25	3/4"-20UNEF 2A	SAE Ø34,9x10C	Ø63,5x1,6
	MS.01310.07.02	A	60	55,3-0,13	35	59,5	32,5	25	3/4"-20UNEF 2A	SAE Ø34,9x10C	Ø60x2,5
	MS.01310.08.02	A	63,5	59-0,13	35	59,5	32,1	25	3/4"-20UNEF 2A	SAE Ø34,9x10C	Ø63,5x2,4
	MS.01310.14.02	A	63,5	60,6-0,13	30	61	39,5	25	3/4"-20UNEF 2A	Z 26,24/48 DP,PA 45°	Ø63,5x1,6
01410	MS.01410.01.02	A	76,2	71,7-0,13	40	75,5	28,1	23,5	1"-20UNEF 2A	Ø40x2,5x30°x14	Ø76,2x2,4
	MS.01410.05.02	A	76,2	71,7-0,13	40	75,5	43	23,5	1"-20UNEF 2A	Ø40x2,5x30°x14	Ø76,2x2,4
	MS.01410.07.02	A	76,2	71,7-0,13	40	75,5	28,1	23,5	1"-20UNEF 2A	SAE Ø38,1x10C	Ø76,2x2,4
01480	MS.01480.01.02	A	76,2	71,7-0,13	40	75,5	28,1	23,5	1"-20UNEF 2A	Ø40x2,5x30°x14	Ø76,2x2,4
	MS.01480.02.02	A	76,2	71,7-0,13	45	74,5	41	22,4	1 1/16"-20UN	Ø45x2,5x30°x16	Ø76,2x2,4
01510	MS.01510.01.02	A	88,9	84,4-0,13	40	75,5	28,1	23,5	1"-20UNEF 2A	SAE Ø38,1x10C	Ø88,9x2,4
01600	MS.01600.01.02	A	88,9	83,3-0,13	45	82,5	30,2	25,4	1 1/16"-20UN	SAE Ø44,45x10C	Ø88,9x3
01610	MS.01610.01.02	A	90	82,3-0,13	45	82,5	36	22,4	1 1/16"-20UN	SAE Ø44,45x10C	Ø90x4
01630	MS.01630.01.02	A	90	82,3-0,13	45	74,5	41	22,4	1 1/16"-20UN	SAE Ø44,45x10C	Ø90x4
	MS.01630.04.02	A	88,9	84,4-0,13	45	74,5	41	22,4	1 1/16"-20UN	SAE Ø44,45x10C	Ø88,9x2,4
	MS.01630.08.02	A	76,2	71,7-0,13	45	74,5	41	22,4	1 1/16"-20UN	SAE Ø44,45x10C	Ø76,2x2,4
	MS.01630.10.02	A	90	82,3-0,13	45	74,5	41	22,4	1 1/16"-20UN	SAE Ø44,45x10C	Ø90x4
	MS.01630.12.02	A	76,2	71,7-0,13	45	74,5	41	22,4	1 1/16"-20UN	SAE Ø44,45x10C	Ø76,2x2,4
	MS.01630.13.02	A	76,2	71,7-0,13	45	78,5	37	22,4	1 1/16"-20UN	SAE Ø44,45x10C	Ø76,2x2,4
	MS.01630.14.02	A	90	82,3-0,13	45	78,5	37	22,4	1 1/16"-20UN	SAE Ø44,45x10C	Ø90x4
01800	MS.01800.01.02	A	110	98,3-0,13	60	91	42,3	30	1 1/4"-18UNEF 2A	SAE Ø57,15x10C	Ø110x6





PART NO PARÇA NO	SPLINE DATA KANAL ÖLÇÜLERİ	THREADS VİDA	TUBE O.D. X THICK. BORU ÇAPı x ET KALIN.	FIG.	T	A	P	U	B
114.3.YM.019.03	T23 ; 24/48 ; 45°	M10x1	50,8 x 1,6	C	30,005	48	-	23,0	57,3
114.3.YM.039.00	T26 ; 24/48 ; 45°	M10x1	50,8 x 2,4	C	30,005	46,3	-	23,0	57,3
114.3.YM.041.00	SAE Ø25 x 6C	M16x1,5	69,9 x 1,6	A	25,007	66,9	16,5	29,0	45,9
114.3.YM.043.00	T26 ; 24/48 ; 45°	M10x1	76,2 x 1,6	C	30,005	73,38	-	53,0	58,3
114.3.YM.043.02	T23 ; 24/48 ; 45°	M10x1	76,2 x 1,6	C	30,005	73,38	-	53,0	58,3
114.3.YM.050.00	T23 ; 24/48 ; 45°	M10x1	63,5 x 1,6	C	30,005	60,6	-	30,0	57,3
114.3.YM.052.00	T25 ; 24/48 ; 45°	M10x1	76,2 x 1,6	C	30,005	73,38	-	53,0	58,3
114.3.YM.060.00	T27 ; 24/48 ; 45°	M10x1	76,2 x 2,4	C	30,005	71,7	-	53,0	58,3
114.3.YM.061.00	T27 ; 24/48 ; 45°	M10x1	76,2 x 1,6	C	30,005	73,38	-	53,0	48
131.3.YM.004.01	SAE 34,9 x 10C	W 3/4"x20	50,8 x 2,4	A	35,25	46,3	28,6	31,7	59,5
131.3.YM.006.00	SAE 34,9 x 10C	W 3/4"x20	63,5 x 1,6	A	35,25	60,6	24,6	31,7	59,5
131.3.YM.007.00	SAE 34,9 x 10C	W 3/4"x20	69,9 x 1,6	A	35,25	66,9	24,6	31,7	59,5
131.3.YM.010.00	SAE 34,9 x 10C	W 3/4"x20	76,2 x 1,6	A	35,25	73,38	24,6	31,7	59,5
131.3.YM.011.00	SAE 34,9 x 10C	M10x1	76,2 x 1,6	B	35,25	73,38	-	27,0	49
131.4.YM.011.00	SAE 34,9 x 10C	M10x1	76,2 x 1,6	C	45,005	73,38	-	31,0	45
131.3.YM.013.00	SAE 34,9 x 10C	M12x1,5	50 x 3	B	35,25	44,1	-	30,6	59,5
131.3.YM.014.00	SAE 34,9 x 10C	M12x1,5	70 x 2	B	35,25	66,2	-	31,7	59,5
131.3.YM.015.00	SAE 34,9 x 10C	M12x1,5	60 x 3	B	35,25	54,2	-	31,7	59,5
131.3.YM.019.00	T 32;24/48;45°	M12x1,5	76,2 x 2,4	B	35,25	71,7	-	38,5	56,5
131.3.YM.020.00	SAE 34,9 x 10C	W 3/4"x20	63,5 x 2,4	A	35,25	59	24,6	31,7	59,5
131.3.YM.021.01	SAE 34,9 x 10C	W 3/4"x20	50 x 3	A	35,25	44,1	28,6	30,6	59,5
151.3.YM.003.00	SAE 38,1 x 10C	W 1"x20	88,9 x 2,4	A	40,005	84,4	19,0	70,0	100,8
151.3.YM.009.00	SAE 38,1 x 10C	W 1"x20	76,2 x 2,4	A	40,005	71,7	19,0	70,0	100,8
151.3.YM.010.00	SAE 38,1 x 10C	W 1"x20	76,2 x 2,4	A	40,005	71,7	22,2	30,0	75,5
151.3.YM.011.00	SAE 38,1 x 10C	W 1"x20	88,9 x 2,4	A	40,005	84,4	22,2	27,8	75,5
151.3.YM.016.00	SAE 38,1 x 10C	W 1"x20	52 x 4	A	40,005	44,1	22,2	29,6	75,5



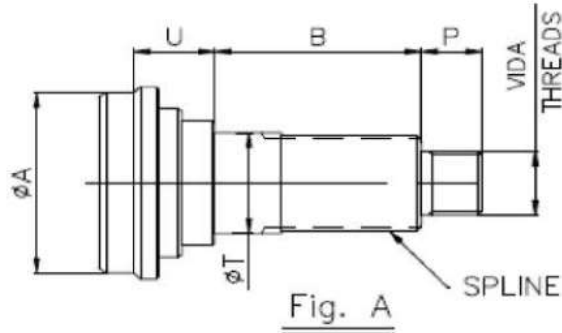


Fig. A

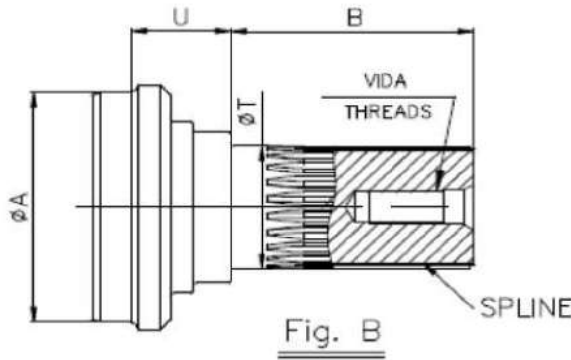


Fig. B

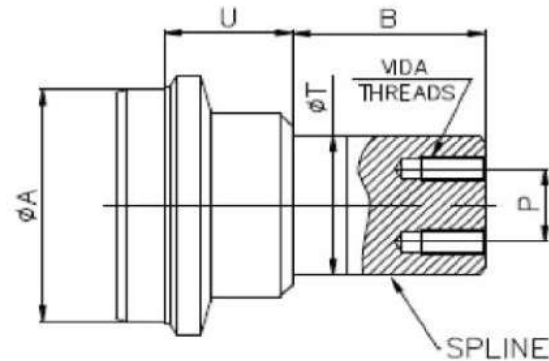


Fig. D

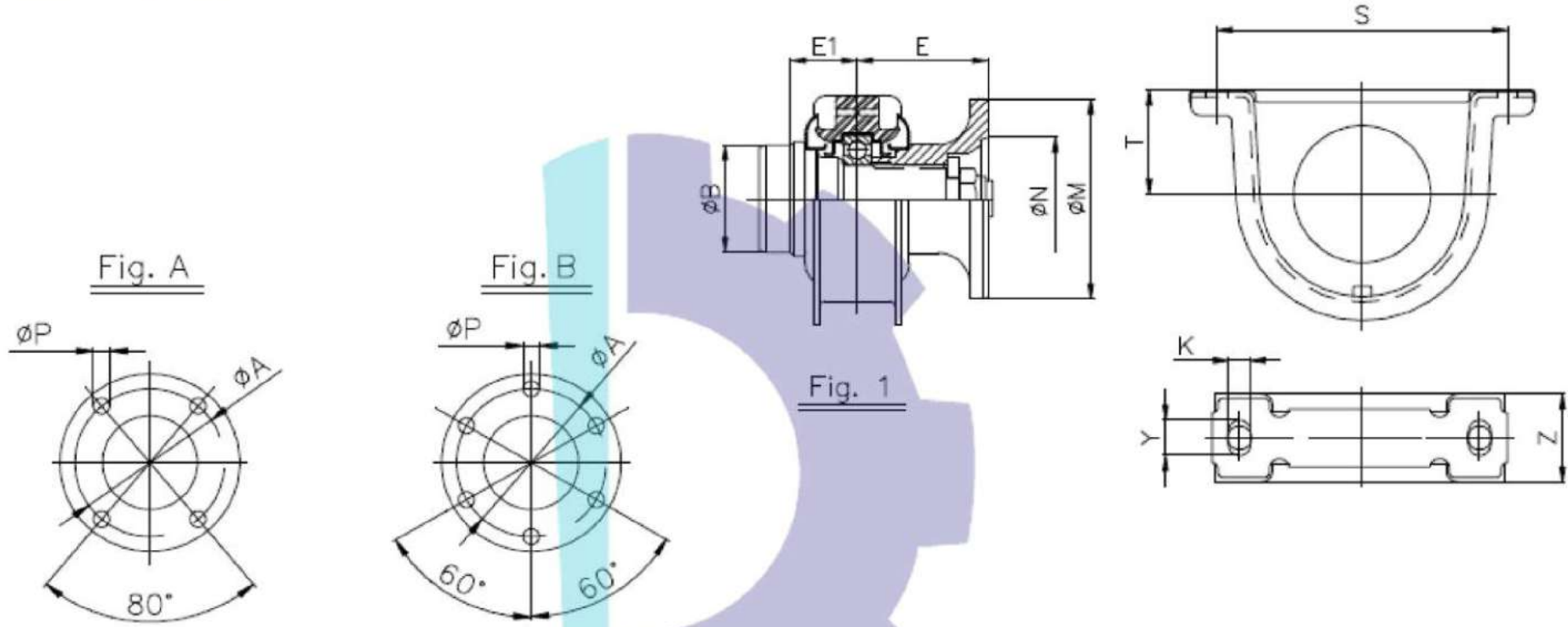
**MIDSHIP STUP SHAFTS / ARAYATAK MILLERİ**

16/11

PART NO PARÇA NO	SPLINE DATA KANAL ÖLÇÜLERİ	THREADS VİDA	TUBE O.D. X THICK. BORU ÇAPı x ET KALIN.	FIG.	T	A	P	U	B
160.3.YM.003.00	SAE 44,5 x 10C	M27x1,5	90 x 3,5	A	55,006	83,4	35,0	14,0	123
160.3.YM.005.00	SAE 44,5 x 10C	1 1/4"x18	3 1/2"x0,134"	A	45,005	82,3	22,2	27,8	81,2
160.3.YM.009.00	SAE 44,5 x 10C	M27x1,5	88,9 x 2,4	A	55,006	84,4	35,0	14,0	123
163.3.YM.007.00	SAE 44,5 x 10C	M27x1,5	76,2 x 2,4	A	45,005	71,7	33,0	20,0	111,5
163.3.YM.012.00	SAE 44,5 x 10C	M27x1,5	90 x 3,5	A	45,005	83,4	35,0	31,7	74,5
163.3.YM.013.00	SAE 44,5 x 10C	M27x1,5	76,2 x 2,4	A	45,005	71,7	35,0	31,7	68,5
163.3.YM.016.00	SAE 44,5 x 10C	M16x1,5	90 x 3,5	B	45,005	84,4	-	35,0	74,5
163.3.YM.017.00	SAE 44,5 x 10C	1 1/4"x18	88,9 x 2,4	A	45,005	84,4	24,6	27,8	77,3
163.3.YM.018.00	SAE 44,5 x 10C	M27x1,5	88,9 x 2,4	A	45,005	84,4	33,0	35,0	74,5
170.3.YM.004.00	SAE 1 61/64" x 10C	1 1/4"x18	101,6 x 3,4	A	50,006	95,0	22,2	27,8	103,2
180.3.YM.004.00	SAE 57,1 x 10C	M27x1,5	88,9 x 4,8	A	60,005	80	35,0	42,0	88,5
180.3.YM.009.00	SAE 59,5 x 16C	1 1/4"x18	114,3 x 3,4	A	60,005	107,8	24,6	33,0	101,6
180.3.YM.010.00	SAE 57,1 x 10C	M27x1,5	110 x 6	A	60,005	98,1	35,0	42,0	88,5
381.3.YM.001.00	45x2,5x16 DIN 5480	M16x1,5	90 x 2,5	B	45,005	85,1	-	34,0	78,9
381.3.YM.002.00	45x2,5x16 DIN 5480	M16x1,5	90 x 2,5	B	45,005	85,1	-	35,0	78,9
381.3.YM.003.00	45x2,5x16 DIN 5480	M16x1,5	88,9 x 2,4	B	45,005	84,4	-	35,0	78,9
385.3.YM.001.01	55x2,5x20 DIN 5480	M16x1,5	92 x 5	B	55,006	82,3	-	31,0	89
385.3.YM.001.02	55x2,5x20 DIN 5480	M16x1,5	88,9 x 3,4	B	55,006	82,3	-	31,0	89
385.3.YM.003.00	55x2,5x20 DIN 5480	M16x1,5	92 x 5	B	55,006	82,1	-	39,0	82
385.3.YM.008.00	55x2,5x20 DIN 5480	M16x1,5	100 x 4	B	55,006	92,2	-	39,0	87
385.3.YM.009.00	55x2,5x20 DIN 5480	M16x1,5	100 x 5	B	55,006	90,12	-	39,0	82
389.3.YM.002.00	60x2,5x22 DIN 5480	M16x1,5	100 x 5	B	60,005	90,12	-	35,0	113
389.3.YM.003.00	60x2,5x22 DIN 5480	M16x1,5	100 x 5	B	60,005	90,12	-	45,0	113
389.3.YM.008.00	60x2,5x22 DIN 5480	M16x1,5	110 x 6	B	60,005	98,6	-	46,5	89
389.3.YM.009.00	60x2,5x22 DIN 5480	M16x1,5	100 x 5	B	60,005	90,12	-	44,5	89
389.3.YM.013.00	60x2,5x22 DIN 5480	M16x1,5	120 x 4	B	60,005	112,2	-	44,5	89
755.3.YM.001.00	65x2x31 DIN 5480	2x M12x1,5	120 x 6	D	65,01	108,2	34,0	56,0	84
755.3.YM.002.00	65x2x31 DIN 5480	2x M12x1,5	120 x 4	D	65,01	112,2	34,0	56,0	84
755.3.YM.003.00	65x2x31 DIN 5480	2x M12x1,5	120 x 3	D	65,01	114,2	34,0	56,0	84
755.3.YM.004.00	65x2x31 DIN 5480	M20x1,5	110 x 6	B	65,01	98,1	-	45,0	112
468.3.YM.001.00	70x2,5x26 DIN 5480	M20x1,5	110 x 6	B	70,01	98,6	-	37,0	110,5
468.3.YM.002.00	70x2,5x26 DIN 5480	M20x1,5	140 x 5	B	70,01	130,3	-	37,0	110,5



ARA YATAK MiLi - MIDSHIP STUB

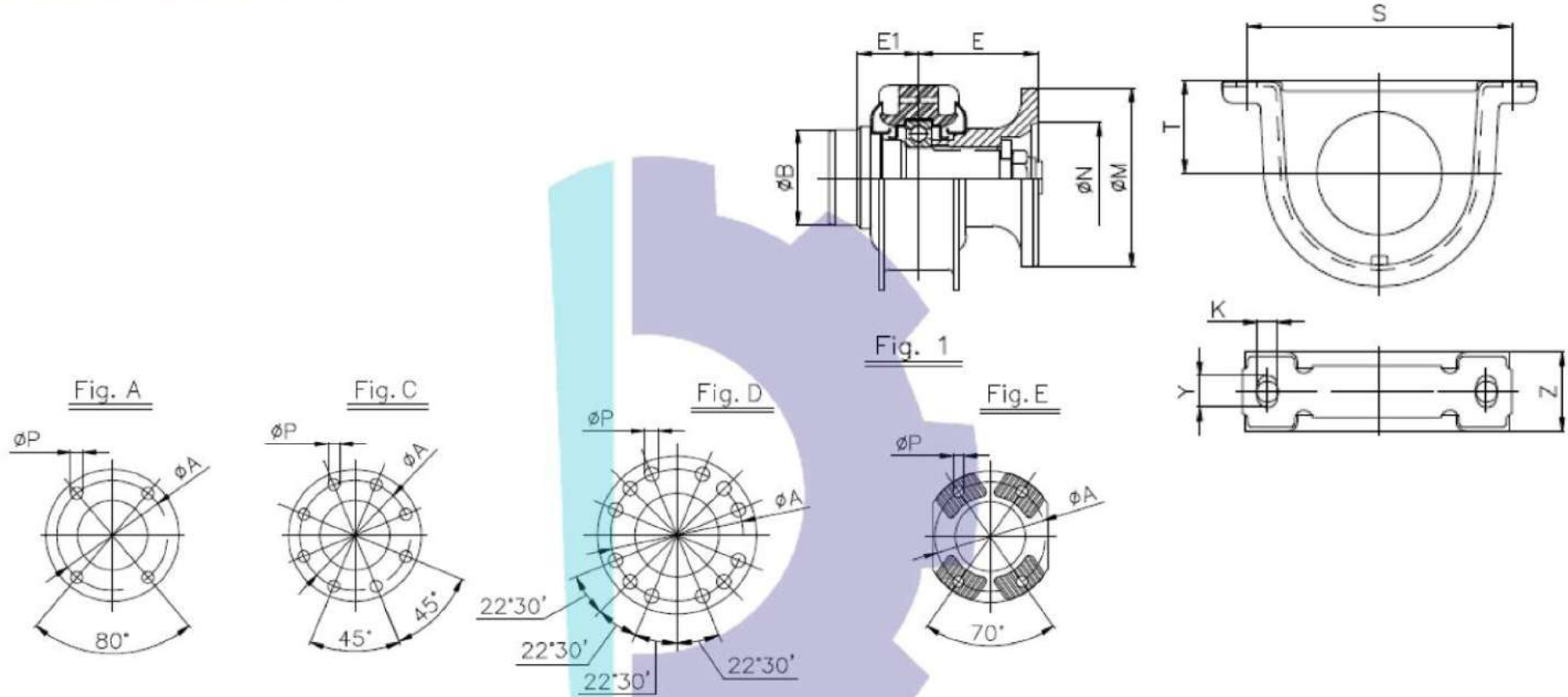


MIDSHIP ASSY'S - ARAYATAK MiLi KOMPLELERİ

16/11

PART NO PARÇA NO	SPLINE DATA KANAL ÖLÇÜLER	TUBE SIZE BORU	FIG.	ØM	ØN	ØA	P	E	E1	B	S	T	K	Y	Z
131.4.DK.001.00	SAEØ34,925x10	Ø69,9x1,6	1A	97,0	60,3	79,40	10,25	73,20	44,50	66,80	168,3	57,90	12,70	14,20	44,50
131.4.DK.002.00	SAEØ34,925x10	Ø63,5x1,6	1A	97,0	60,3	79,40	9,76	73,20	44,20	60,60	168,3	57,90	12,70	14,20	44,50
131.4.DK.005.00	SAEØ34,925x10	Ø50,8x2,4	1B	100,0	57,0	84,00	8,15	73,20	44,50	60,60	168,3	57,90	12,70	14,20	44,50
131.4.DK.008.00	SAEØ34,925x10	Ø76,2x1,6	1A	97,0	60,3	79,40	10,25	73,20	44,20	73,30	168,3	57,90	12,70	14,20	44,50
131.4.DK.009.00	SAEØ34,925x10	Ø76,2x2,4	1A	118,0	69,9	95,20	12,25	73,20	44,20	71,60	168,3	57,90	12,70	14,20	44,50
131.4.DK.010.00	SAEØ34,925x10	Ø50,8x2,4	1A	97,0	60,3	79,40	10,25	73,20	44,20	46,20	168,3	57,90	12,70	14,20	44,50
131.4.DK.011.00	SAEØ34,925x10	Ø63,5x2,10	1A	97,0	60,3	79,40	10,25	73,20	44,20	59,60	168,3	57,90	12,70	14,20	44,50
141.4.DK.001.00	SAEØ38,10x10	Ø76,2x2,4	1A	118,0	69,9	95,30	11,30	82,60	44,30	71,60	168,3	62,70	12,70	12,70	51,20
141.4.DK.002.00	SAEØ38,10x10	Ø76,2x2,4	1A	118,0	69,9	95,30	12,35	82,60	44,30	71,60	168,3	62,80	12,70	12,60	51,20

ARA YATAK MiLi - MIDSHIP STUB



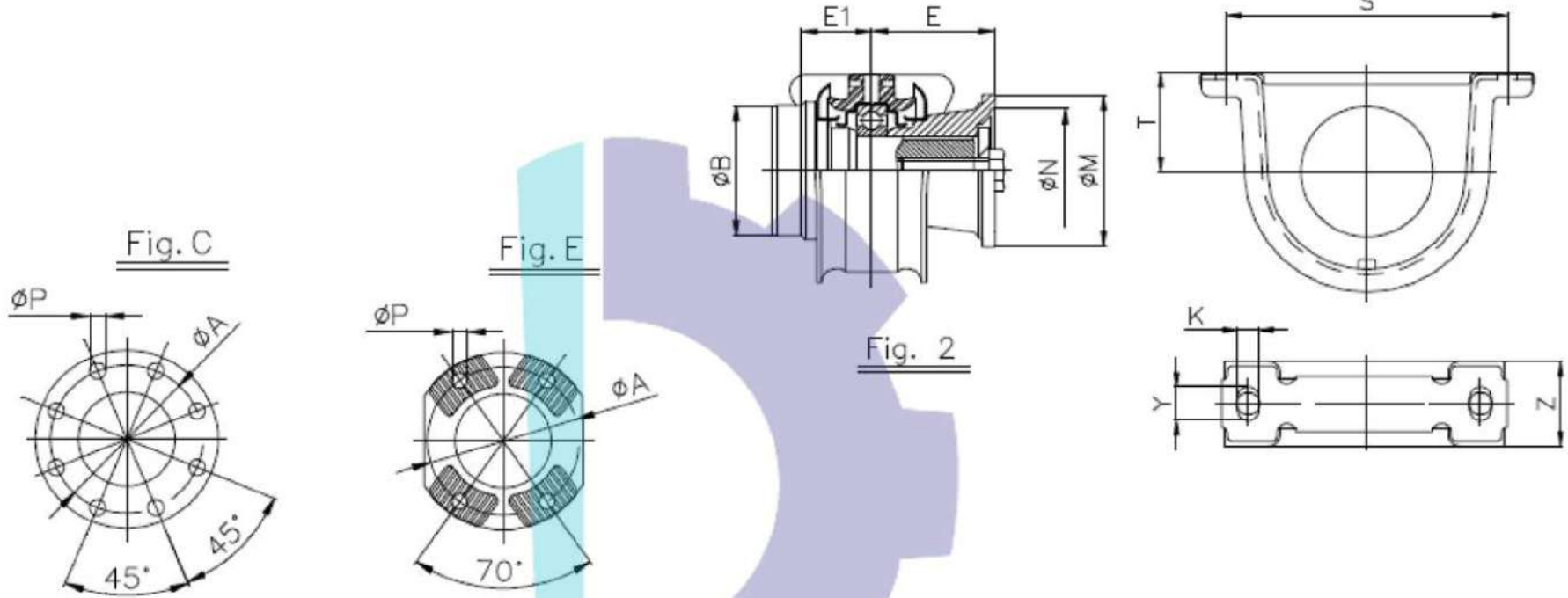
MIDSHIP ASSY'S - ARAYATAK MiLi KOMPLELERİ

16/11

PART NO PARÇA NO	SPLINE DATA KANAL ÖLÇÜLER	TUBE SIZE BORU	FIG.	ØM	ØN	ØA	P	E	E1	B	S	T	K	Y	Z
141.4.DK.004.00	SAEØ38,10x10	Ø76,2x2,4	1C	120,0	75,0	101,50	10,25	82,60	43,90	71,60	168,3	62,70	12,70	20,60	51,20
141.4.DK.006.00	SAEØ38,10x10	Ø76,2x2,10	1A	118,0	69,9	95,30	12,35	82,60	43,90	72,30	168,3	62,70	12,70	20,60	51,20
163.4.DK.001.00	SAEØ44,45x10	Ø 92x5,0	1C	175,0	168,3	155,60	9,70	89,10	44,50	82,10	193,8	69,10	16,0	23,90	57,60
163.4.DK.002.00	SAEØ44,45x10	Ø76,2x2,4	1A	146,0	95,3	120,70	14,25	79,50	41,50	71,60	193,8	69,10	16,0	23,90	57,60
163.4.DK.003.00	SAEØ44,45x10	Ø76,2x2,4	1A	146,0	95,3	120,70	14,40	85,60	44,50	71,60	193,8	69,10	16,0	23,90	57,60
163.4.DK.006.00	SAEØ44,45x10	Ø76,2x2,4	1C	120,0	75,0	101,50	10,25	78,00	44,50	71,60	193,8	69,10	16,0	23,90	57,60
163.4.DK.007.00	SAEØ44,45x10	Ø76,2x2,4	1E	120,0	82,0	100,00	11,15	85,50	44,50	71,40	193,8	69,10	16,0	23,90	57,60
181.4.DK.001.00	SAEØ57,15x10	Ø100x6,0	1D	203,0	196,8	184,10	11,25	105,00	53,00	98,10	219	85,70	16,0	23,90	63,50



## ARA YATAK MiLi - MIDSHIP STUB



**MIDSHIP ASSY'S - ARAYATAK MiLi KOMPLELERİ**

16/11

PART NO PARÇA NO	SPLINE DATA KANAL ÖLÇÜLER	TUBE SIZE BORU	FIG.	ØM	ØN	ØA	P	E	E1	B	S	T	K	Y	Z
381.4.DK.001.01	N45x2,5x16 DIN5480	Ø 90x2,5	2E	120,0	82,0	100,0	M10x1	89,50	44,50	85,10	193,8	69,10	14,0	23,90	57,60
381.4.DK.001.02	N45x2,5x16 DIN5480	Ø88,9x2,4	2E	120,0	82,0	100,0	M10x1	89,50	44,50	84,30	193,8	69,10	14,0	23,90	57,60
385.4.DK.001.00	N55x2,5x20 DIN5480	Ø 92x5,0	2E	150,0	98,6	130,0	13,15	91,00	48,00	82,10	193,8	71,40	16,0	23,80	57,20
385.4.DK.002.00	N55x2,5x20 DIN5480	Ø 92x5,0	2E	150,0	98,6	130,0	13,15	94,50	43,50	82,10	219	85,70	16,0	24,00	45,00
385.4.DK.003.00	N55x2,5x20 DIN5480	Ø 92x5,0	2E	165,0	95,0	130,0	16,20	94,50	43,50	82,10	219	85,70	16,0	24,00	45,00
385.4.DK.004.00	N55x2,5x20 DIN5480	Ø 92x5,0	2C	175,0	168,3	155,6	9,80	87,50	48,00	82,10	193,8	71,40	16,0	23,80	57,20
389.4.DK.002.00	N60x2,5x22 DIN5480	Ø100x6,0	2E	180,0	108,0	150,0	15,15	110,00	57,50	90,10	230	85,70	17,0	17,00	63,50
389.4.DK.003.00	N60x2,5x22 DIN5480	Ø100x5,0	2E	150,0	95,0	130,0	13,15	87,40	56,00	90,10	230	85,70	17,0	17,00	63,50

ARA YATAK MiLi - MIDSHIP STUB

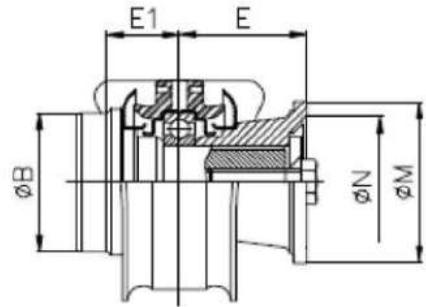


Fig. 2

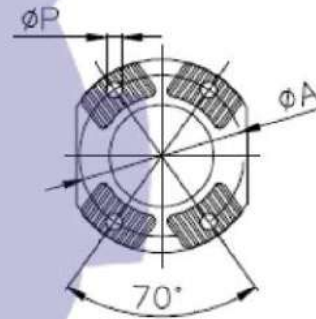
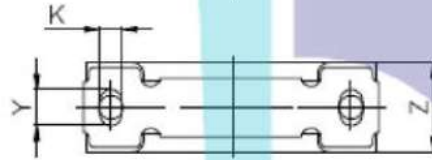
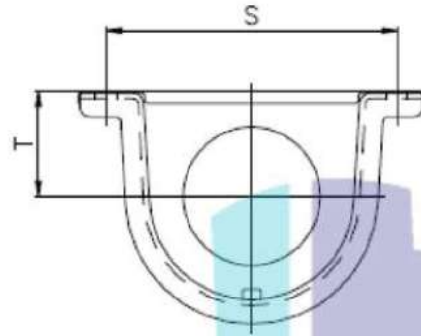


Fig. E

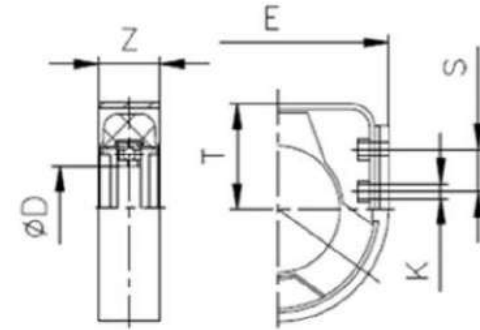


Fig. 3

MIDSHIP ASSY'S - ARAYATAK MİLi KOMPLELERİ

16/11

PART NO PARÇA NO	SPLINE DATA KANAL ÖLÇÜLER	TUBE SIZE BORU	FIG.	ØM	ØN	ØA	P	E	E1	B	S	T	K	Y	Z
395.4.DK.001.00	N65x2,0x31 DIN5480	Ø110x6,0	2E	180,0	111,6	150,0	15,15	110,0	56,50	98,10	230	86,0	17,0	22,40	55,60
395.4.DK.002.02	N65x2,0x31 DIN5480	Ø120x4,0	2E	150,0	105,0	130,0	13,15	86,5	67,50	112,10	230	86,0	17,0	22,40	55,60
395.4.DK.003.01	N65x2,0x31 DIN5480	Ø120x6,0	2E	180,0	105,0	150,0	15,15	86,5	67,50	108,10	230	86,0	17,0	22,40	55,60
395.4.DK.003.02	N65x2,0x31 DIN5480	Ø120x4,0	2E	180,0	105,0	150,0	15,15	86,5	67,50	112,10	230	86,0	17,0	22,40	55,60
395.4.DK.003.03	N65x2,0x31 DIN5480	Ø120x3,0	2E	180,0	105,0	150,0	15,15	86,5	67,50	114,10	230	86,0	17,0	22,40	55,60
468.4.DK.001.01	N70x2,5x26 DIN5480	Ø110x6,0	3E	180,0	105,0	150,0	15,15	110,0	47,00	98,10	35	88,2	M 12	-	52,00
468.4.DK.001.02	N70x2,5x26 DIN5480	Ø140x5,0	3E	180,0	105,0	150,0	15,15	110,0	54,00	130,10	35	88,2	M 12	-	52,00